

463BTW

Before beginning, read the instructions below and follow all local plumbing and building codes.

For this installation of your new wall mounted faucet it is presumed that the water supply lines are in the wall where the tub will be placed and are in direct access for faucet installation.

A rounded hole, 1-1/2" in diameter, will provide access to the water supply lines when mounting the faucet. The distance between the mounting location to the water supply lines should be 3 3/8".

SHUT OFF ALL WATER SUPPLY LINES AT THE TUB WHEN INSTALLING NEW FAUCET
Unpack and inspect your new faucet for any shipping damages and ensure no pieces are missing.

If any damages are discovered DO NOT INSTALL and contact customer support at 877-795-5684.

You may also call our customer service for any other assistance with our products

TOOLS AND MATERIALS NEEDED :

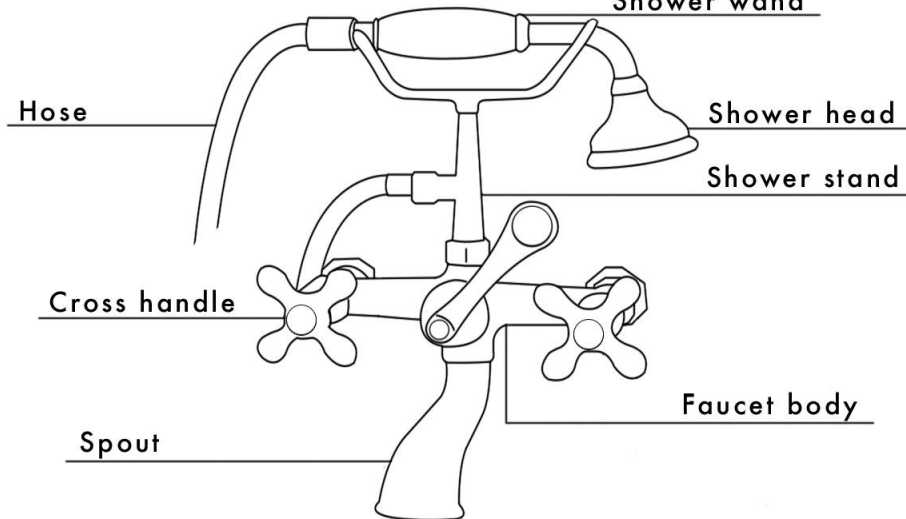
Screwdriver | Plumber's Tape | Adjustable wrench

Plumbers Tape

Includes Wall Mounting Kit

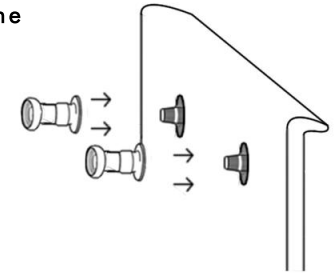
Threaded nipple (2) Silver Metal Washer (2) Washer Nut (2)
Gold Washer (2) Rubber Cone Washer (2) Nut (2)

Shower wand



It is always advised to place plumber's tape on all threaded areas.

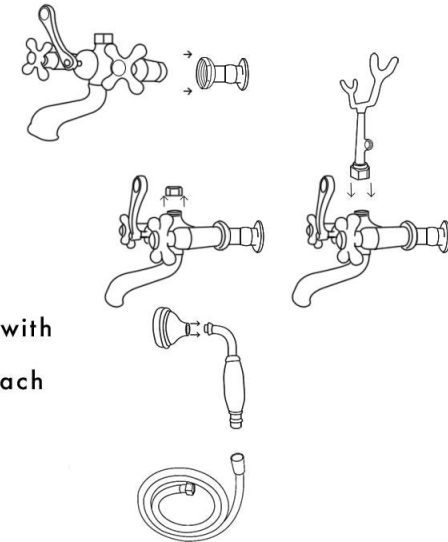
1. Assuming your water lines are prepared. Locate a threaded nipple, one silver metal washer, and a washer nut from the deck mounting kit. Slide the metal washer down the nipple and thread the washer nut onto the straight end of the nipple.



2. Thread the straight end of the nipple into the waterlines already prepared at the faucet mounting location. Taking one of your wall shanks, thread it onto the opposite end of the nipple and tighten to secure. On the outside of the tub, tighten the washer nut to secure the water line and shank to the tub.

REPEAT STEPS 1 - 2 FOR THE REMAINING NIPPLE AND WALL SHANK

3. Taking only the body of the faucet, attach the body to both risers. Tighten the wall shanks and faucet together.



4. Remove the nut behind the spout to show a cone rubber washer. Thread the stand onto the faucet body with the rubber cone washer remaining in the faucet.

5. Attach the short end of the hose to the stand with the black washer that is tied to the hose. Now attach the opposite end to the shower wand. Attach the shower head to the wand as well.

6. Test your new faucet by turning on the water and ensuring that both HOT and COLD water come out and that the faucet is leak free.

CONTACT US:
TheTubConnection.com
TOLL FREE: 877-795-5684
Sales@TheTubConnection.com